

# Energy under control

Get involved in NSW's demand response program this summer with the kWatch™ Intelligent Controller



*flow*  
power

**AEMO has predicted that peak demand may outstrip supply this summer.**

**We've cracked the answer. Our Controller means you can get paid to power down.**

### **Demand response**

The power market is changing. More of us are using power at the same time, meaning that **peak demand** is on the up.

The Government could build more power stations but the simplest solution is to use power smarter.

This is where businesses come in. If you can power down in places when the market needs you to, you can be financially rewarded by participating in demand response programs.

### **Get on with the job**

We know you have a business to run. That's why we invented the kWatch™ Intelligent Controller.

Installed on your site, the Controller gives you more insight into your business, alerts when you need them and the opportunity to make thousands of dollars a year in demand response payments.

The Controller integrates your energy intensive equipment so you can respond within minutes to market signals.

# Install the Controller and get paid to shift your power this summer.

Over the next three years in NSW, the Australian Renewable Energy Agency (ARENA) and the NSW Government are funding greater business involvement in demand response.

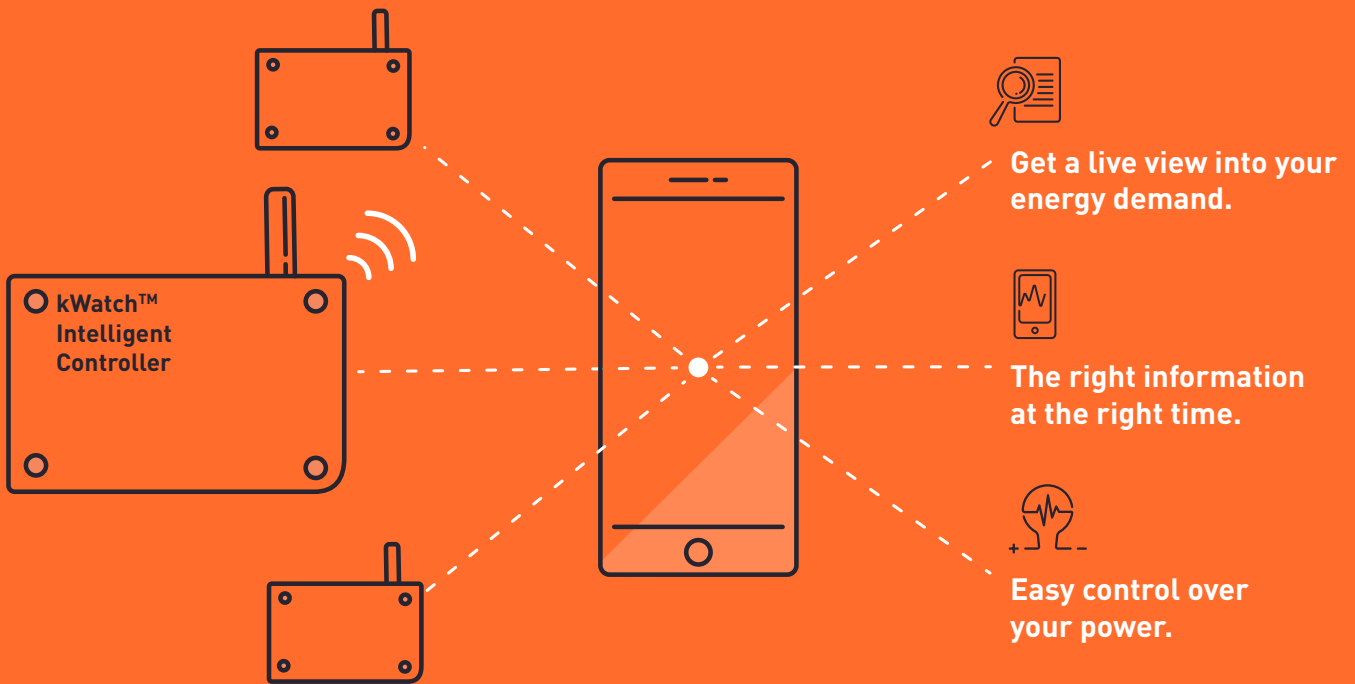
As a part of this initiative, Flow Power will partner with commercial and industrial businesses in NSW. The installation of the kWatch Intelligent Controller will allow

these businesses to reduce demand in just minutes. They will receive participation payments in addition to a revenue stream if they are called upon to shift power use.

**For business, that means a new revenue stream over summer.**

*This Activity received funding from ARENA as part of ARENA's Advancing Renewables Programme - Demand Response.*

# The kWatch™ Intelligent Controller gives you transparency and control over your electricity use through live data feeds, alerts and automation.



“We created the controller ourselves and manufacture them here in Victoria. It’s part of a complete system that makes power easy to manage.”

– Matthew van der Linden, MD and Founder  
Flow Power

## One system to rule them all

If you have a complex operation or multiple sites, it can be hard to monitor use consistently. The kWatch™ Intelligent Controller helps you watch over all demand remotely and easily get involved in demand response programs.

# Take control



## ----- Get a live view into your energy demand.

A live data feed allows you to watch and manage your demand.

The Controller not only monitors electricity demand but can watch temperature, water pressure and flow, wind speed and air pressure.



## ----- The right information at the right time.

You don't need to sit by day and night waiting for change. We'll text or email you an alert if there's something you need to know about.



## ----- Easy control over your power.

You can run your business while the Controller manages your power. It'll power down equipment or transfer to a generator with your approval.

### **Use the Controller for demand response.**

By having a view into your power demand, alerts when you need them and the ability to power down quickly, the Controller means you can safely and cost-effectively get involved in demand response programs.

# Getting set up for summer is as easy as the system itself.



## Step One A quick chat

Have a kWatch™ assessment with a power expert over the phone to confirm it suits your business.



## Step Two Put your name to paper

Review and sign an agreement with Flow Power and confirm your sites.



## Step Three Installation and testing

You can use your installers to install and configure the system with the guidance on our experts.



## Step Four Activate the controller

On December 1 you're live – it's as easy as that.

## About Flow Power

At Flow Power, we do energy differently, and we think you should too. That's why we're transforming the way Australian businesses buy their electricity. Since our beginnings in 2009, we've set out to find new and better ways to bring you energy that brings costs down, and puts the power back in your hands.

### Find out more

[flowpower.com.au/kwatch-nsw](http://flowpower.com.au/kwatch-nsw)

### Talk to us

1300 08 06 08



**flow**  
power